

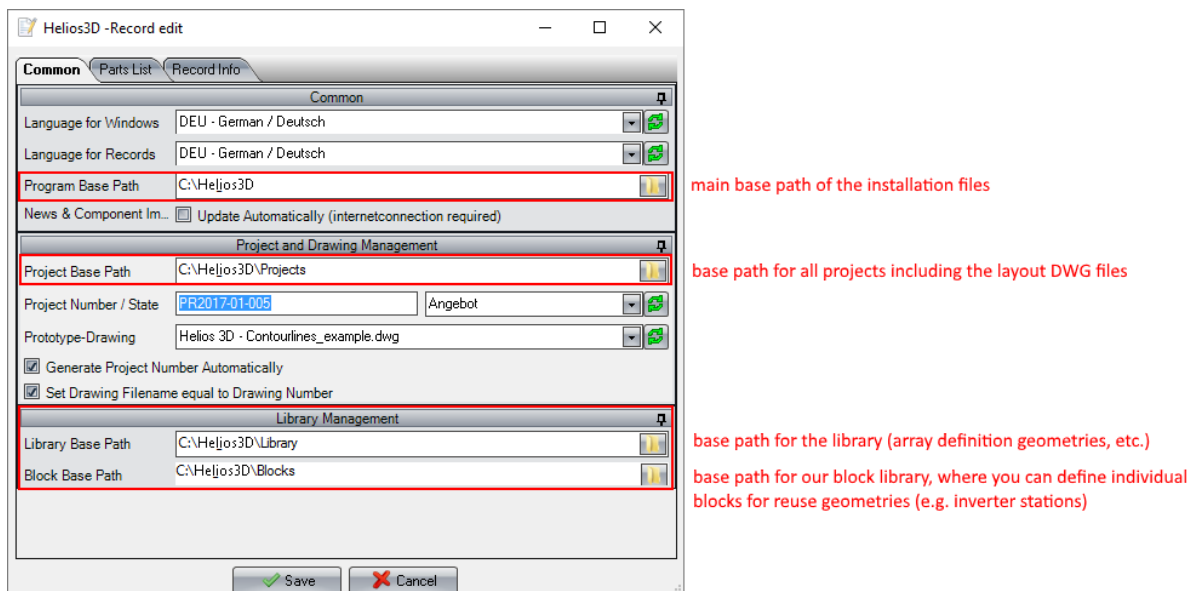
## Backing Up Helios 3D

For minimizing the damage done by a data loss, we recommend backing up your data at regular intervals. We also recommend backing up your data before installing an update. Of course, we test our update before we publish them, but we cannot rule out the possibility of a bad scenario for the complete variety of existing company environments.

A complete data backup for Helios 3D includes the database, as well as any part of the installation. That is needed, because planning data are partially stored in a drawing or in the database. So, the drawing files and the database entries are needed.

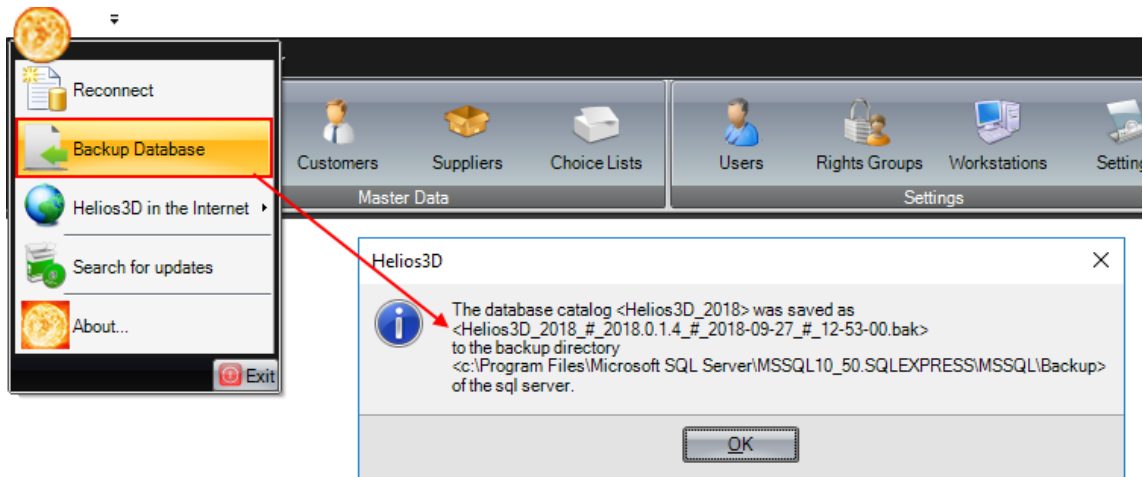
We recommend the following procedure:

1. Create a copy (at least) of your project and library folder. Their current paths are set in the Helios 3D system settings.



2. Backup your database. For that you need SQL Server Management Studio Express. A manual can be found on the Microsoft website. This task should be done by your IT professional.

From HELIOS 3D 2017 any database user with full access rights on the SQL Server can also create a database backup out of the main application.



The target path for the .bak file is on the SQL Server, not on the client!!!

You can ensure a perfect move to a later program version, by creating a copy of your complete Helios 3D environment. So, you can create two independent Helios 3D environments, one as backup of your current working version and one version for running an update.

For that you can do as follows:

1. Copy the complete Helios 3D installation. That means the installation folder + project folder (if not already included) + library folder (if not already included).
2. Copy your database. For that you can create a backup of the original database and afterwards restore the backup with a new database name. For this step SQL Management Studio is required. You can always use the latest program version from the Microsoft web pages.
3. Start the Helios 3D copy and log into the copied database.
4. Go to the Helios 3D system settings and change the paths (program, project and library base path) accordingly.

For updating one of your two environments, you just need to select the corresponding database for the update. The program paths are automatically read from the database, like set in step 4.